

Han shielded module female

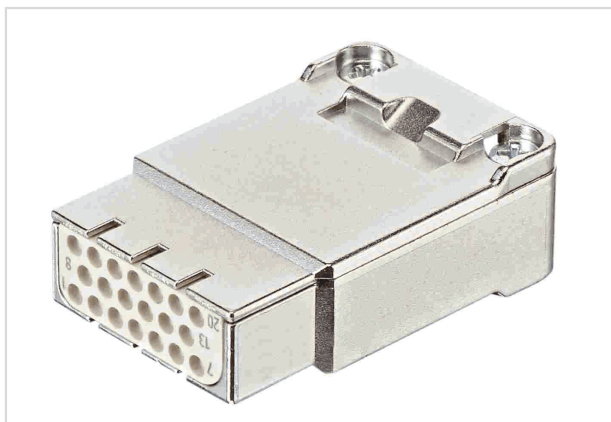


Image is for illustration purposes only. Please refer to product description.

Part number	09 14 020 3113
Specification	Han shielded module female
HARTING eCatalogue	https://b2b.harting.com/09140203113

Identification

Category	Inserts
Specification	Han [®] Shielded Module insert

Version

Termination method	Crimp termination
Gender	Female
Number of contacts	20
further contacts	+ shielding
Details	Please order crimp contacts separately.

Technical characteristics

Conductor cross-section	0.09 ... 0.52 mm ²
Rated current	4 A
Rated voltage	32 V
Rated impulse voltage	0.8 kV
Pollution degree	3
Contact resistance, shielding	≤100 mΩ
Limiting temperature	-40 ... +85 °C
Mating cycles	≥500

Material properties

Material (insert)	Liquid crystal polymer (LCP)
Material (shielding)	Zinc die-cast, nickel-plated



Pushing Performance
Since 1945

Material properties

Material flammability class acc. to UL 94	V-0
RoHS	compliant
ELV status	compliant
China RoHS	e
REACH Annex XVII substances	Not contained
REACH ANNEX XIV substances	Not contained
REACH SVHC substances	Not contained
California Proposition 65 substances	Not contained
Fire protection on railway vehicles	EN 45545-2 (2020-08)
Requirement set with Hazard Levels	R22 (HL 1-3) R23 (HL 1-3)

Specifications and approvals

Specifications	IEC 60664-1 IEC 61984
Approvals	DNV GL
UL / CSA	UL 1977 ECBT2.E235076

Commercial data

Packaging size	1
Net weight	30 g
Country of origin	Germany
European customs tariff number	85389099
GTIN	5713140021259
eCl@ss	27440218 Module for industrial connectors (data)