

DSUB SVFE SSDPANG73-25409PPL3GCCLK4-40HT

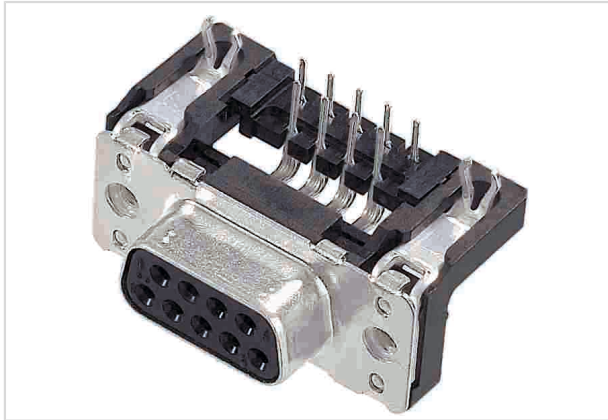


Image is for illustration purposes only. Please refer to product description.

Part number	09 66 156 7613
Specification	DSUB SVFE SSDPANG73-25409PPL3GCCLK4-40HT
HARTING eCatalogue	https://b2b.harting.com/09661567613

Identification

Category	Connectors
Series	D-Sub
Identification	Standard
Element	Connector
Description of the contact	Stamped Angled

Version

Termination method	Reflow soldering termination (THR)
Gender	Female
Size	D-Sub 1
Connection type	Motherboard to daughtercard
Number of contacts	9
Termination length	2.9 mm
PCB fixing	With board locks
Locking type	Fixing flange with fitted screw lock 4-40 UNC

Technical characteristics

Distance between rows	2.54 mm
Contact spacing (termination side)	2.74 mm
Rated current	6.5 A
Clearance distance	≥1 mm
Creepage distance	≥1 mm



Pushing Performance
 Since 1945

Technical characteristics

Insulation resistance	$>10^{10} \Omega$
Contact resistance	$\leq 10 \text{ m}\Omega$
Tightening torque	$\leq 0.4 \text{ Nm}$ Locking screw
Limiting temperature	-55 ... +125 °C (during reflow soldering max. +240 °C for 15 s)
Insertion force	$\leq 30 \text{ N}$
Withdrawal force	$\geq 3.3 \text{ N}$ $\leq 20 \text{ N}$
Performance level	3
Mating cycles	≥ 50
Test voltage $U_{r.m.s.}$	1 kV
Isolation group	II ($400 \leq \text{CTI} < 600$)
PCB thickness	$\geq 1.6 \text{ mm}$
Installation height	7.3 mm
Hot plugging	No

Material properties

Material (insert)	Thermoplastic resin, glass-fibre filled (PCT) Shell: steel, nickel plated
Colour (insert)	Grey
Material (contacts)	Copper alloy
Surface (contacts)	Noble metal over Ni
Material flammability class acc. to UL 94	V-0
RoHS	compliant with exemption
RoHS exemptions	6(c): Copper alloy containing up to 4 % lead by weight
ELV status	compliant with exemption
China RoHS	50
REACH Annex XVII substances	Not contained
REACH ANNEX XIV substances	Not contained
REACH SVHC substances	Yes
REACH SVHC substances	Lead
ECHA SCIP number	ecef7555-f643-4ceb-a337-fc54762297f1
California Proposition 65 substances	Yes
California Proposition 65 substances	Lead Nickel



Pushing Performance
Since 1945

Material properties

Requirement set with Hazard Levels	R26
------------------------------------	-----

Specifications and approvals

Specifications	DIN 41652
----------------	-----------

Commercial data

Packaging size	100
Net weight	9.86 g
Country of origin	Romania
European customs tariff number	85366990
GTIN	5713140081239
eCl@ss	27440214 D-Sub coupler