

Mechanical characteristics
cable group

interface dimensions acc. to assembly code
centre conductor
outer conductor

Components
centre contact
outer contact
other metal parts
crimp ferrule
insulator

Electrical characteristics
impedance
voltage proof
contact resistance
centre contact
outer contact

Environmental
RoHS compliant

Mechanische Eigenschaften
Kabelgruppe

Steckgesicht nach Montageanleitung
Innenleiter
Außenleiter

Bauteile
Innenkontakt
Außenkontakt
sonstige Metallteile
Crimprohr
Isolierung

Elektrische Eigenschaften
Wellenwiderstand
Prüfspannung
Durchgangswiderstand
Innenkontakt
Außenkontakt

Umgebung
RoHS konform

G 1: 7806A Belden, 9907 Belden, KX 15, CNT-195 Andrew, LMR-195 TMS, HPF 195 Harbour Industries, RG-58C/U, WCX195 NEK/CDT

IEC 60169-12
B0605
crimp
crimp

Materials / Material
CuZn38Pb2
CuZn39Pb3
CuZn39Pb3
SF Cu w
POM

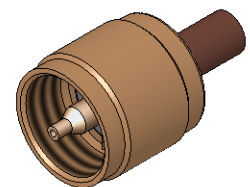
Finish / Oberfläche
Cu2Ag5
Cu2Ni5
Cu2Ni5
Ni5



50 Ω
2 kV_{eff} / 50 Hz

≤ 5 mΩ
≤ 5 mΩ

2011/65/EU

M 1:1



| | | | | | | | |
|------------------|-------------------------------|-------------|----------------------|---------------------------------------|------------|--------------------------|--|
| Änd./ rev. index | Änderungs-Nr. / revision code | Datum/ date | Name/ name | Datum/ date | Name/ name | Gewicht/ weight [g] | |
| | | | gez./ drawn | 03.11.2016 | MA | | |
| | | | gepr./ appr. | 23.11.2016 | KL | ca./approx. 20 | |
| | | | Maßstab/ scale | Benennung/ title | | |  |
| | | | 2:1 (1:1) | UHF Straight Plug UHF-Kabelstecker | | | |
| | | | Untert./ doc. type | Zeichnungsnr./ drawing no. | | |  Maße/ dimensions: mm |
| | | | K | J01040A0001 | | | |
| | | | Ersatz für/ replaces | | | | Original : DIN A4 |
| | | | | | | Blatt/ sheet 1 von/ of 1 | |