

Han K 4/2 Pin Male Insert

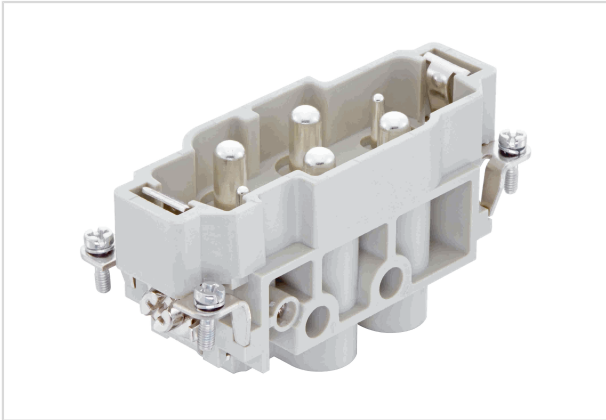


Image is for illustration purposes only. Please refer to product description.

Part number	09 38 006 2601
Specification	Han K 4/2 Pin Male Insert
HARTING eCatalogue	https://b2b.harting.com/09380062601

Identification

Category	Inserts
Series	Han-Com®
Identification	Han® K 4/2

Version

Termination method	Screw termination
Gender	Male
Size	16 B
Number of contacts	6
Number of signal contacts	2
Number of power contacts	4
PE contact	Yes

Technical characteristics

Conductor cross-section	1.5 ... 16 mm ² 0.5 ... 2.5 mm ² Signal
Rated current	80 A
Rated voltage	830 V
Rated impulse voltage	8 kV
Pollution degree	3
Rated current (signal)	16 A
Rated voltage (signal)	400 V
Rated impulse voltage (signal)	6 kV



Pushing Performance
 Since 1945

Technical characteristics

Pollution degree (signal)	3
Rated current acc. to UL	80 A
Rated voltage acc. to UL	600 V
Rated current acc. to UL (signal)	16 A
Rated voltage acc. to UL (signal)	600 V
Rated current acc. to CSA	80 A
Rated voltage acc. to CSA	300 V
Rated current acc. to CSA (signal)	16 A
Rated voltage acc. to CSA (signal)	300 V
Insulation resistance	$>10^{10} \Omega$
Contact resistance	$\leq 0.3 \text{ m}\Omega$
Contact resistance, signal area	$\leq 1 \text{ m}\Omega$
Stripping length	14 mm
	7.5 mm Signal
Tightening torque	1.2 Nm @ 1.5 mm ²
	2 Nm @ 2.5 mm ²
	3 Nm @ 4 mm ²
	3 Nm @ 6 mm ²
	3 Nm @ 10 mm ²
	3 Nm @ 16 mm ²
	0.5 Nm Signal
Limiting temperature	-40 ... +125 °C
Mating cycles	≥ 500

Material properties

Material (insert)	Polycarbonate (PC)
Colour (insert)	RAL 7032 (pebble grey)
Material (contacts)	Copper alloy
Surface (contacts)	Silver plated
Material flammability class acc. to UL 94	V-0
RoHS	compliant with exemption
RoHS exemptions	6(c): Copper alloy containing up to 4 % lead by weight
ELV status	compliant with exemption
China RoHS	50
REACH Annex XVII substances	Not contained
REACH ANNEX XIV substances	Not contained



Pushing Performance
Since 1945

Material properties

REACH SVHC substances	Yes
REACH SVHC substances	Lead
ECHA SCIP number	5dbb3851-b94e-4e88-97a1-571845975242
California Proposition 65 substances	Yes
California Proposition 65 substances	Lead
Fire protection on railway vehicles	EN 45545-2 (2020-08)
Requirement set with Hazard Levels	R22 (HL 1-3) R23 (HL 1-3)

Specifications and approvals

Specifications	IEC 60664-1 IEC 61984
Approvals	DNV GL
UL / CSA	UL 1977 ECBT2.E235076 CSA-C22.2 No. 182.3 ECBT8.E235076

Commercial data

Packaging size	1
Net weight	116 g
Country of origin	Romania
European customs tariff number	85366990
GTIN	5713140056220
eCl@ss	27440205 Contact insert for industrial connectors