

D-SUB 9M-IDC

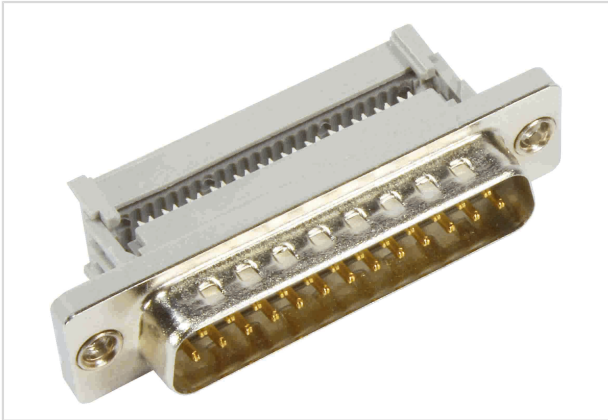


Image is for illustration purposes only. Please refer to product description.

Part number	09 66 128 7700
Specification	D-SUB 9M-IDC
HARTING eCatalogue	https://b2b.harting.com/09661287700

Identification

Category	Connectors
Series	D-Sub
Identification	Standard
Element	Connector
Description of the contact	Stamped Straight

Version

Termination method	IDC insulation displacement termination
Gender	Male
Size	D-Sub 1
Connection type	PCB to cable Cable to cable
Number of contacts	9
Locking type	Fixing flange with feed through hole Ø 3.1 mm

Technical characteristics

Conductor cross-section	0.09 ... 0.13 mm ²
Conductor cross-section	AWG 28 ... AWG 26
Rated current	2 A
Clearance distance	≥0.7 mm
Creepage distance	≥0.7 mm
Insulation resistance	>10 ¹⁰ Ω
Contact resistance	≤10 mΩ



Pushing Performance
Since 1945

Technical characteristics

Limiting temperature	-55 ... +125 °C
Insertion force	≤30 N
Withdrawal force	≥3.3 N ≤20 N
Performance level	3
Mating cycles	≥50
Test voltage $U_{r.m.s.}$	1 kV
Hot plugging	No

Material properties

Material (insert)	Thermoplastic resin, glass-fibre filled (PBTP) Shell: Plated steel
Colour (insert)	Black
Material (contacts)	Copper alloy
Surface (contacts)	Noble metal over Ni
Material flammability class acc. to UL 94	V-0
RoHS	compliant
ELV status	compliant
China RoHS	e
REACH Annex XVII substances	Not contained
REACH ANNEX XIV substances	Not contained
REACH SVHC substances	Not contained

Specifications and approvals

Specifications	DIN 41652
UL / CSA	UL 1977 ECBT2.E102079

Commercial data

Packaging size	100
Net weight	6.67 g
Country of origin	China
European customs tariff number	85366990
GTIN	5713140080478
eCl@ss	27440214 D-Sub coupler