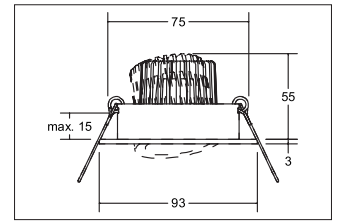
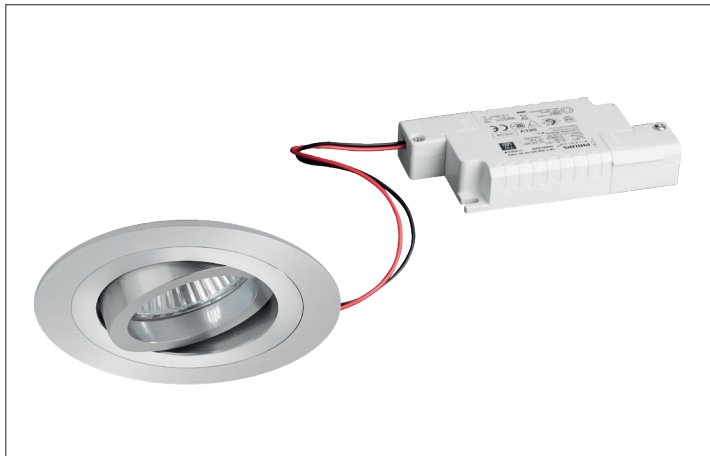


LED-Einbaustrahler, Phasenabschnitt dimmbar
Artikel-Nr. 39309253



Ø (m)	E0(0°) [lx]
1.0 m	0.7 0.7 1173.2
2.0 m	1.4 1.4 283.3
3.0 m	2.1 2.0 130.4
4.0 m	2.8 2.7 73.3
5.0 m	3.5 3.4 46.9

LED-Einbaustrahler, Phasenabschnitt dimmbar, alu, round. In a compact design, for installation in tool-less rapid assembly systems. Set including a converter for 230-V mains voltage, trailing-edge phase dimmable, dimensions of converter: L 110 x W 50 x H 19 mm. Mounting method: Recessed mounting, Place of installation: Ceiling-mounted, Material: Aluminium / Glass / Plastic, Degree of protection: according to DIN EN 60529 IP20, Protection class: (EN 61140) II, Voltage: 230V AC 50Hz, Power: 6W, Amount of light sources / fittings: 1.0 Qty, Luminous flux: 680lm, Colour temperature: 3.000 K, Light colour : White, Beam angle: 38°, Adjustability: Pivoted, With control gear: Yes, Control: Trailing-edge phase.

Artikel-Nr.	39309253
Stand:	25.10.2021 23:47

Colour temperature	3000 K
Colour	Alu
Beam angle	38 °
Amount of light sources / fittings	1 Qty
Material	Aluminium / Glass / Plastic
Power	6 W
Lamp	LED
Colour rendering	CRI > 80
Control	Trailing-edge phase
Outer diameter	93 mm

Built-in diameter	75 mm
Installation depth	50 mm
Voltage	230V AC 50Hz
Degree of protection	IP20
Protection class	II
Circlip	Without circlip
Adjustability	Pivoted
Swivel angle	30 °
Circuit type	Parallel conduction