

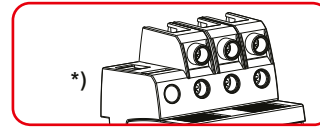
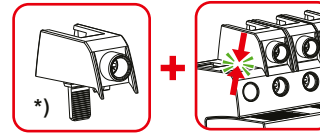
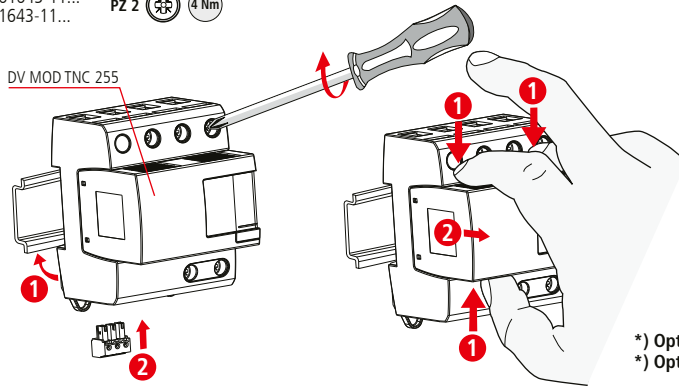
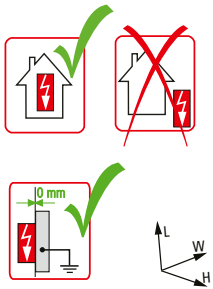
**DEHNventil modular DV M2 TNC 255 FM**

- DE Einbauanleitung
- GB Installation instructions
- IT Istruzioni di montaggio
- FR Instructions de montage
- NL Montagehandleiding
- ES Instrucciones de montaje
- PT Instruções de montagem
- DK Monteringsvejledning
- SE Monteringsanvisning
- FI Asennusohje
- GR Οδηγίες συναρμολόγησης
- PL Instrukcja montażu
- CZ Návod k montáži
- TR Montaj kılavuzu
- RU Инструкция по монтажу
- CN 安装说明
- HU Szerelési útmutató
- JP 設置説明書



I+II+III IEC 61643-11...  
1+2+3 EN 61643-11...

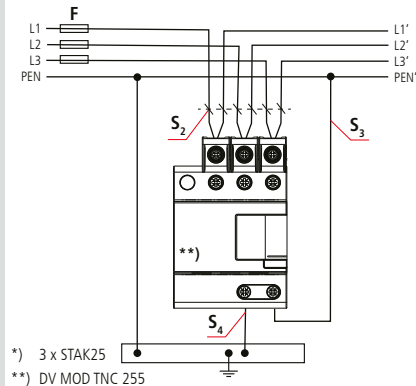
PZ 2 (4 Nm)



\*) **Optional** available, **STAK25** (Part No. 952 589) for serial connection  
\*) **Optional** erhältlich, **STAK25** (Art.-Nr. 952 589) für serielle Verdrahtung

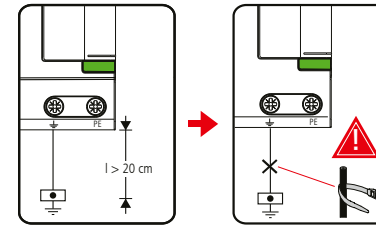
|                                | <b>DV M2 TNC 255 FM</b>       |
|--------------------------------|-------------------------------|
|                                | DV MOD TNC 255                |
| $U_N / \text{Tot.} : \pm 10\%$ | 230 / 400 V (50/60 Hz)        |
| $U_C$                          | 255 V (50/60 Hz)              |
| $I_N$                          | 50 kA <sub>rms</sub>          |
| $I_{SCCR}$                     | 50 kA <sub>rms</sub>          |
| $I_{imp} 10/350 \mu s$         | 25 kA (L $\rightarrow$ PEN)   |
| $I_n 8/20 \mu s$               | 25 kA (L $\rightarrow$ PEN)   |
| $U_{OC}$                       | 6 kV                          |
| max. $\equiv$ 1)               | 100 A gG                      |
| max. $\equiv$ 2)               | 250 A gG                      |
| $\theta$                       | -40°C ... +80°C (... +60°C ?) |
| $I_{PE}$                       | << 10 $\mu$ A                 |
| $\Phi$                         | 5% ... 95%                    |
| IP 3)                          | 20                            |
| L x W x H                      | 90 mm x 72 mm x 66 mm         |

1) TNC



| <b>DEHNventil modular DV M2 TNC 255 FM</b> |                           |
|--|---------------------------|
| F  | $F \leq 100 \text{ A gG}$ |
|  | $F > 100 \text{ A gG}$    |

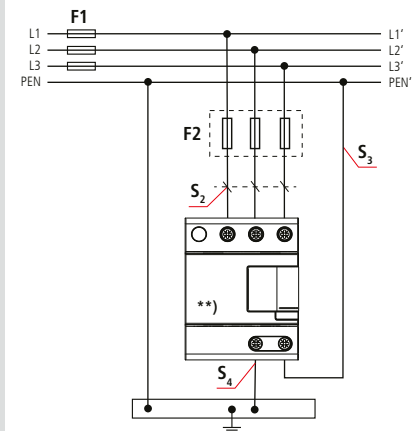
| F<br>A gG | S <sub>2</sub> / mm <sup>2</sup> | S <sub>3</sub> / mm <sup>2</sup> | S <sub>4</sub> / mm <sup>2</sup> |
|-----------|----------------------------------|----------------------------------|----------------------------------|
| 25        | 6                                | 16                               | 16                               |
| 35        | 6                                | 16                               | 16                               |
| 40        | 6                                | 16                               | 16                               |
| 50        | 10                               | 16                               | 16                               |
| 63        | 10                               | 16                               | 16                               |
| 80        | 16                               | 16                               | 16                               |
| 100       | 25                               | 16                               | 16                               |



|  | 16 mm                 | 16 mm                  | 16 mm |
|--|-----------------------|------------------------|-------|
| min. $\square$ L1, L2, L3, N, PE, $\downarrow$ | 6 mm <sup>2</sup>     |                        |       |
| max. $\square$ L1, L2, L3, N, PE, $\downarrow$ | 25 mm <sup>2</sup> 4) | 35 mm <sup>2</sup>     |       |
| $\square$ $\Delta$                             | 16 mm <sup>2</sup> Cu | $\geq 15.5 \text{ mm}$ |       |

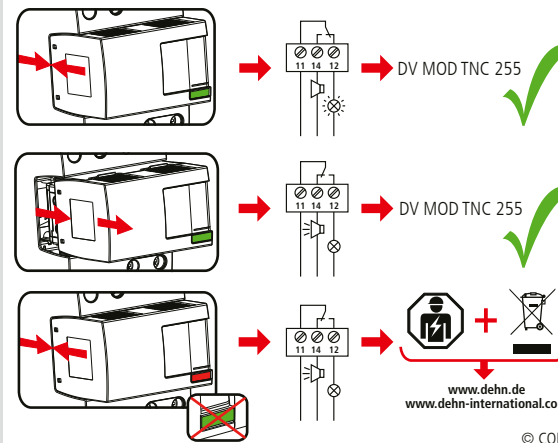
\*) 3 x STAK25  
\*\*) DV MOD TNC 255

2) TNC



| <b>DEHNventil modular DV M2 TNC 255 FM</b> |                            |
|--|----------------------------|
| F1   | $F1 > 250 \text{ A gG}$    |
|  | $F2 \leq 250 \text{ A gG}$ |
| F2   | $F1 \leq 250 \text{ A gG}$ |
|  | <del><math>F2</math></del> |

| F1<br>A gG | S <sub>2</sub> / mm <sup>2</sup> | S <sub>3</sub> / mm <sup>2</sup> | S <sub>4</sub> / mm <sup>2</sup> | F2<br>A gG |
|------------|----------------------------------|----------------------------------|----------------------------------|------------|
| 25         | 6                                | 16                               | 16                               | ---        |
| 35         | 6                                | 16                               | 16                               | ---        |
| 40         | 6                                | 16                               | 16                               | ---        |
| 50         | 6                                | 16                               | 16                               | ---        |
| 63         | 10                               | 16                               | 16                               | ---        |
| 80         | 10                               | 16                               | 16                               | ---        |
| 100        | 16                               | 16                               | 16                               | ---        |
| 125        | 16                               | 16                               | 16                               | ---        |
| 160        | 16                               | 16                               | 16                               | ---        |
| 200        | 25                               | 25                               | 25                               | ---        |
| 250        | 25                               | 25                               | 25                               | ---        |
| >250       | 25                               | 25                               | 25                               | 250        |



| <b>DEHNventil modular DV M2 TNC 255 FM</b> |  |
|--|--|
| $U_N / I_N$                                | AC: 250 V / 0.5 A                                  |
|  | DC: 250 V / 0.1 A<br>125 V / 0.2 A<br>75 V / 0.5 A |
| max. 1.5 mm <sup>2</sup>                   |  |

\*\*) DV MOD TNC 255

