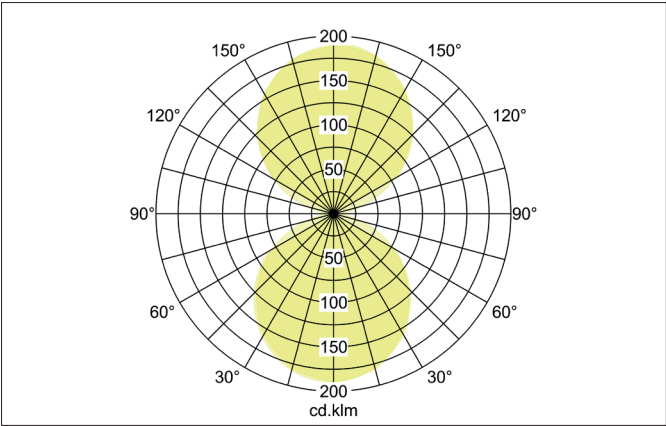
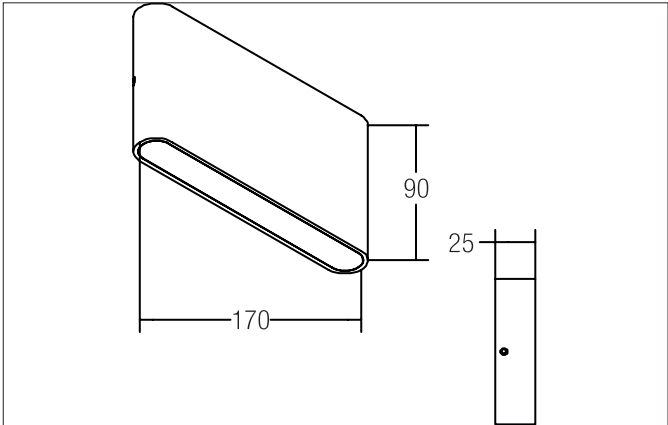


ORIES LED wall surface mounted luminaire, IP54
Article no. 10046253

Light.
For Generations.



Tender
LED wall surface mounted luminaire, IP54, Rectangular. Luminaire length 90.0 mm, Luminaire width 170.0 mm, Height 25.0 mm Weight 0.584 kg, with rotationssymmetrical, deep, wide distributed light intensity. optimal light distribution due to a glass opal cover. Luminous flux 530 lm, Power 2 x 10,8 W, System Efficiency 49 lm/W, Light colour warm white, Correlated color temprature (CCT) 3.000 K, Colour rendering index CRI > 80, Housing material: Aluminium, Colour: Alu, Permissible ambient temperature (ta): -20 °C - +25 °C, Protection class (EN 61140): I, Degree of protection (DIN EN 60529): IP54. With electronic driver, on/off switchable.

| Article data | |
|-------------------|--|
| Article no. | 10046253 |
| GTIN | 4250047772507 |
| Series name | ORIES |
| Short description | LED wall surface mounted luminaire, IP54 |
| Material | Aluminium |
| Colour | Alu |
| Type of surface | Matt |
| Shape | Rectangular |
| Length | 90 mm |
| Width | 170 mm |
| Hight | 25 mm |
| Scope of delivery | Incl. converter for connection to the 230-V mains voltage, on/off switchable |
| Weight | 0.584 kg |

ORIES LED wall surface mounted luminaire, IP54

Article no. 10046253

Light.
For Generations.

| Lighting technology | |
|---------------------|-----------------|
| Colour temperature | 3.000 K |
| Light colour | White |
| Light output | Direct/Indirect |
| Luminous flux | 530 lm/m |
| System efficiency | 49 lm/W |
| Colour rendering | CRI > 80 |
| Reflector | Without |
| Beam angle | 120° |
| Light sharing | Symmetric |

| Operating technology of the luminaire | |
|---------------------------------------|--------|
| System output | 10.8 W |
| Voltage type | AC |
| AC nominal voltage max | 230 V |
| Frequenz max. | 50 Hz |
| Lamp | LED |
| Protection class | I |
| Degree of protection | IP54 |
| Dimmable | No |
| Control | on/off |
| Bulb change possible | Yes |

| Mounting technology | |
|-----------------------|------------------|
| Mounting method | Surface mounting |
| Place of installation | Wall-mounted |
| Adjustability | Not adjustable |
| Material cover | Glass opal |

| Packing data | |
|-------------------------|--|
| Gross weight | 0.678 kg |
| Length of packaging | 200 mm |
| Packaging width | 100 mm |
| Packaging height | 60 mm |
| Disposal at end of life | <p>This product must not be disposed of with household waste. You are obliged, to dispose of such electrical waste separately.</p> <p>By disposing of electrical waste and other old or defective electronics separately, you support recycling or other forms of re-use. In that way you help to take care and to avoid that harmful substances get into the environment.</p> |