

## DSUB SV MA SSDP ANG73-254 25P PL3 GCM3HT

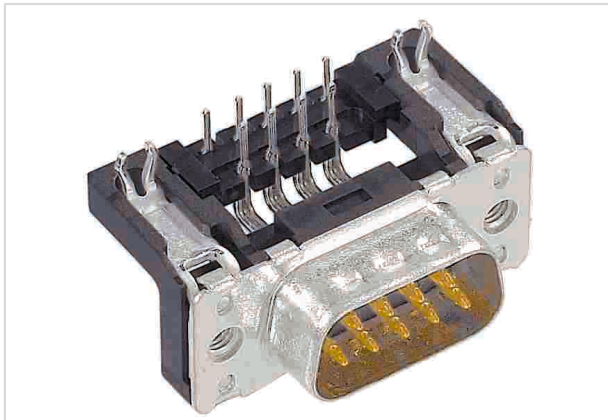


Image is for illustration purposes only. Please refer to product description.

Part number	09 65 366 7811
Specification	DSUB SV MA SSDP ANG73-254 25P PL3 GCM3HT
HARTING eCatalogue	<a href="https://b2b.harting.com/09653667811">https://b2b.harting.com/09653667811</a>

### Identification

Category	Connectors
Series	D-Sub
Identification	Standard
Element	Connector
Description of the contact	Stamped Angled

### Version

Termination method	Reflow soldering termination (THR)
Gender	Male
Size	D-Sub 3
Connection type	Motherboard to daughtercard
Number of contacts	25
Termination length	2.9 mm
PCB fixing	With board locks
Locking type	Fixing flange with thread M3

### Technical characteristics

Distance between rows	2.54 mm
Contact spacing (termination side)	2.76 mm
Rated current	6.5 A
Clearance distance	≥1 mm
Creepage distance	≥1 mm



**Pushing Performance**  
Since 1945

## Technical characteristics

Insulation resistance	$>10^{10} \Omega$
Contact resistance	$\leq 10 \text{ m}\Omega$
Tightening torque	$\leq 0.6 \text{ Nm}$ Female screw lock
Limiting temperature	-55 ... +125 °C (during reflow soldering max. +240 °C for 15 s)
Insertion force	$\leq 83 \text{ N}$
Withdrawal force	$\geq 7.8 \text{ N}$ $\leq 56 \text{ N}$
Performance level	3
Mating cycles	$\geq 50$
Test voltage $U_{r.m.s.}$	1 kV
Isolation group	II ( $400 \leq CTI < 600$ )
PCB thickness	$\geq 1.6 \text{ mm}$
Installation height	7.3 mm
Hot plugging	No

## Material properties

Material (insert)	Thermoplastic resin, glass-fibre filled (PCT) Shell: steel, nickel plated
Colour (insert)	Grey
Material (contacts)	Copper alloy
Surface (contacts)	Noble metal over Ni
Material flammability class acc. to UL 94	V-0
RoHS	compliant
ELV status	compliant
China RoHS	e
REACH Annex XVII substances	Not contained
REACH ANNEX XIV substances	Not contained
REACH SVHC substances	Not contained
California Proposition 65 substances	Yes
California Proposition 65 substances	Lead Nickel
Requirement set with Hazard Levels	R26



**Pushing Performance**  
Since 1945

## Specifications and approvals

Specifications	DIN 41652
----------------	-----------

## Commercial data

Packaging size	100
Net weight	13.14 g
Country of origin	Romania
European customs tariff number	85366990
GTIN	5713140078925
eCl@ss	27440214 D-Sub coupler