

## Wall mounting appliance inlet - housing dimensions 170x118



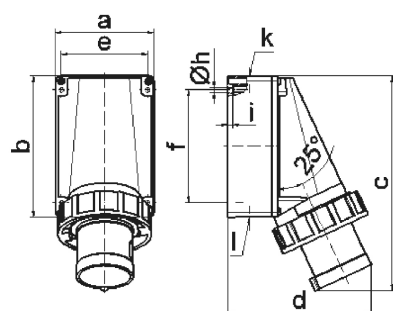
| Product description       |                               |
|---------------------------|-------------------------------|
| BALS-Prd.-Nr              | 24342                         |
| EAN                       | 4024941243421                 |
| Product category          | Wall mounting appliance inlet |
| Current                   | 63A                           |
| Number of poles           | 4p                            |
| Arrangement of phases     | 3P+PE                         |
| Position of earth contact | 7 h                           |
| Voltage                   | 480 - 500V~                   |

| Product description    |  |
|------------------------|--|
| Frequency              | 50/60Hz  |
| Protection degree      | IP67   |
| Colour code            | black RAL 9005   |
| Colour of appliance    | Collar black RAL 9005, Bayonet ring grey RAL 7035, Housing bottom grey RAL 7035, Housing top grey RAL 7035 |
| Connection design      | with screw terminal  |
| Maximum conductor size | 16,0 qmm   |
| Cable entry            | top entry M40 bottom entry M32   |
| Height                 | 259mm  |
| Width                  | 118mm  |
| Depth                  | 174mm  |
| Dimension of enclosure | 170x118 mm (HxW)   |
| Material of enclosure  | Polycarbonate  |
| Contacts               | The contact carrier is made of polyamide, the contacts are brass nickel plated                             |

| Additional technical properties |   |
|---------------------------------|---|
|                                 | The cable entry is one at top open and two at bottom closed |
|                                 | Lower part of housing rotatable by 180°                     |

| Logistics data |                  |
|----------------|------------------|
| Weight/pcs     | 0.995 kg / Piece |

| Logistics data |               |
|----------------|---------------|
| Packaging      | Bag           |
| Content amount | 1 ST          |
| EAN            | 4024941243421 |
| Length         | 174 mm        |
| Width          | 118 mm        |
| Height         | 259 mm        |
| Weight         | 0.996 kg      |
| Volume         | 5,317.788 ccm |
| Packaging      | Carton        |
| Content amount | 5 ST          |
| EAN            | 4024941964814 |
| Length         | 445 mm        |
| Width          | 335 mm        |
| Height         | 210 mm        |
| Weight         | 5.351 kg      |
| Volume         | 29,040 ccm    |



5 MB 37

| Ampere Polzahl | 63 3   | 63 4   | 63 5   |  |  |  |
|----------------|--------|--------|--------|--|--|--|
| a              | 118,0  | 118,0  | 118,0  |  |  |  |
| b              | 170,0  | 170,0  | 170,0  |  |  |  |
| c              | 259,0  | 259,0  | 259,0  |  |  |  |
| d              | 174,0  | 174,0  | 174,0  |  |  |  |
| e              | 104,0  | 104,0  | 104,0  |  |  |  |
| f              | 136,0  | 136,0  | 136,0  |  |  |  |
| h ø            | 6,1    | 6,1    | 6,1    |  |  |  |
| i              | 6,0    | 6,0    | 6,0    |  |  |  |
| k              | M40    | M40    | M40    |  |  |  |
| l              | M32/32 | M32/32 | M32/32 |  |  |  |
| Leiter mm² min | 6      | 6      | 6      |  |  |  |
| Leiter mm² max | 16     | 16     | 16     |  |  |  |