

## Wall mounting appliance inlet - housing dimensions 126x83

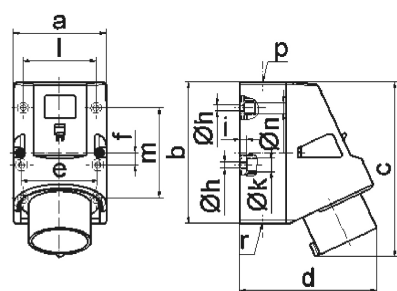


Product description	
BALS-Prd.-Nr	24625
EAN	4024941947558
Product category	TE wall mounting appliance inlet Quick-Connect
Current	16A
Number of poles	5p
Arrangement of phases	3p+N+PE
Position of earth contact	1 h

Product description	
Voltage	> 50V for all other not classified voltages and/or frequencies. This time position can additionally process in special applications, in which a distinction to standardized positions needed to be used.
Protection degree	IP44
Colour code	gray RAL 7035
Colour of appliance	Housing bottom grey RAL 7035, Housing top grey RAL 7035, Collar grey RAL 7035
Connection design	screwless spring-clamp technology
Maximum conductor size	2,5 qmm
Cable entry	1xM25 top, 2xM25 bottom
Height	156mm
Width	83mm
Depth	123mm
Dimension of enclosure	126x83 mm (HxW)
Material of enclosure	Polyamide
Contacts	The contact carrier is made of high temperature resistant material, the contacts are brass nickel plated

Additional technical properties	
	The cable entry is one at top open and two at bottom closed
	Lower part of housing rotatable by 180°
	4 cut out fixing holes in the lower part of housing

Logistics data	
Weight/pcs	0.304 kg / Piece
Packaging	Carton
Content amount	10 ST
EAN	4024941836296
Length	330 mm
Width	216 mm
Height	260 mm
Weight	3.266 kg
Volume	17,062.5 ccm



5 MB 45

Ampere	16	32	32	32		
Polzahl	5	3	4	5		
a	83,0	83,0	83,0	83,0		
b	126,0	126,0	126,0	126,0		
c	155,5	165,0	165,0	166,0		
d	122,0	128,0	128,0	130,0		
e	68,0	68,0	68,0	68,0		
f	11,0	11,0	11,0	11,0		
h ø	5,5	5,5	5,5	5,5		
i	6,5	6,5	6,5	6,5		
k ø	12,0	12,0	12,0	12,0		
l	65,0	65,0	65,0	65,0		
m	80,0	80,0	80,0	80,0		
n ø	10	10,0	10,0	10,0		
p	M25	M25	M25	M25		
r	2xM25	2xM25	2xM25	2xM25		
Leiter mm <sup>2</sup> min	1	2,5	2,5	2,5		
Leiter mm <sup>2</sup> max	2,5	6	6	6		