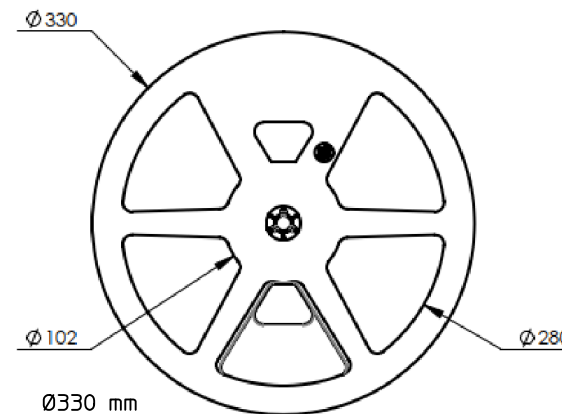
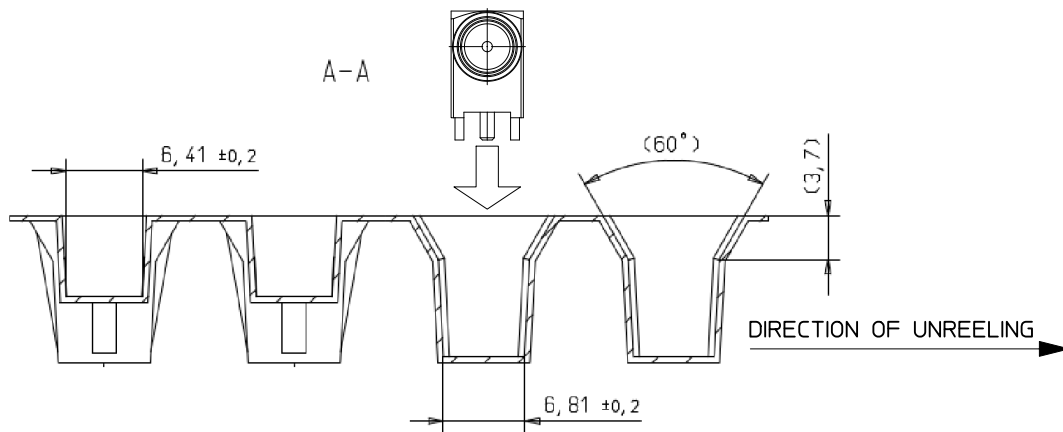


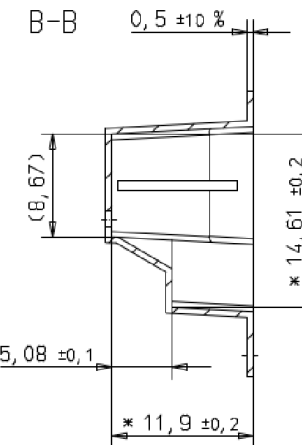
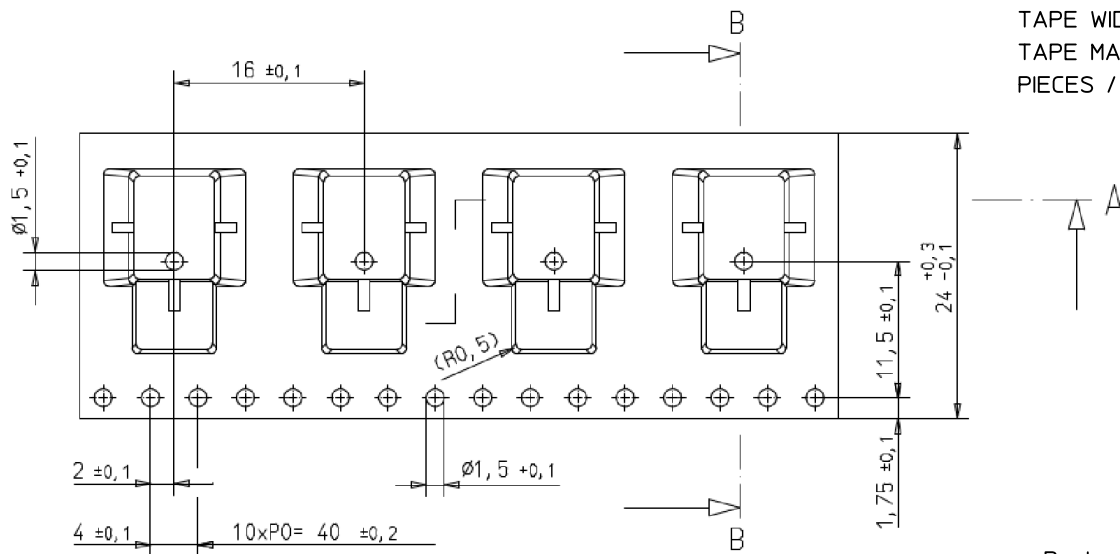
Weitergabe sowie Vervielfältigung dieses Dokuments, Verwertung und Mitteilung seines Inhalts sind verboten, soweit nicht ausdrücklich gestattet. Zuwiderhandlungen verpflichten zu Schadenersatz. Alle Rechte für den Fall der Patent-, Gebrauchsmuster- oder Designeintragung vorbehalten. Bauartbedingtes Spiel ist in den Toleranzangaben nicht berücksichtigt.

Transfer or duplication of this document as well as the utilisation or communication of its content are not permitted unless express consent is granted. Violations give rise to claims for damages. All rights reserved in case of patent, utility model or design patent registrations. Tolerance specifications do not include clearances inherent in the design.



REEL Ø330 mm
 REEL WIDTH 30,4 mm
 REEL MATERIAL PS
 TAPE WIDTH 24 mm
 TAPE MATERIAL PS
 PIECES / REEL 100

M 1:5



Packaging according to IEC 60286-3

- EN ISO 291 23/50

LEADER 500 mm
 -> 31 EMPTY COMPARTMENTS WITH 16 mm PITCH

 TRAILER 300 mm
 -> 19 EMPTY COMPARTMENTS WITH 16 mm PITCH

 FREE END WITH 9 mm BLACK TAPE

DIN A4 	document-no. / ri	article-no.	scale	- Simplified representation - Document excluded from change process - Linear dimensions [mm]
	01448072 / 00	1340150	2:1	
date	document-type			
28.04.2022	TECDOC 2D_Packaging			
description		CUC-COX-J1M-A/LFS		
page 1	of 1			