

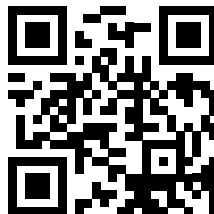
# FREEDM™ Tight Buffer Cable

For UniCam® installations, we highly recommend the use of our Corning 900 µm tight-buffered cables:

- Flame-retardant, universal cables for conduit, duct and riser applications
- Interbuilding and intrabuilding backbone cabling
- Facilitates easier termination of low-fibre-count installations in the LAN
- Eliminates the need for fan-out kits

## Indoor and Outdoor Applications

- Waterblocking technology for outdoor applications
- UV-and microbe-resistant for duct installations
- Efficient and craft-friendly cable preparation indoors or outdoors
- Easy installation in space-constrained areas through small diameter and bend radius
- Easy and consistent stripping (up to 10 cm) with the TB3 tight-buffered construction
- All-dielectric cable construction requires no grounding or bonding



[opcomm.corning.com/3-UniCamSupport](http://opcomm.corning.com/3-UniCamSupport)

### Contact Us

If you require more information about UniCam® connectors and applications, or if you wish to discover how easy termination can be with a simple demonstration, then contact us:

### Corning Optical Communications GmbH & Co. KG

Leipziger Strasse 121 • 10117 Berlin, GERMANY  
Customer Care: [cc.emea@corning.com](mailto:cc.emea@corning.com)  
+00 800 2676 4641 • FAX: +49 30 5303 2335  
[www.corning.com/opcomm/emea](http://www.corning.com/opcomm/emea)

Corning Optical Communications reserves the right to improve, enhance, and modify the features and specifications of Corning Optical Communications products without prior notification. A complete listing of the trademarks of Corning Optical Communications is available at [www.corning.com/opcomm/trademarks](http://www.corning.com/opcomm/trademarks). All other trademarks are the properties of their respective owners. Corning Optical Communications is ISO 9001 certified. © 2013, 2015 Corning Optical Communications. All rights reserved. Published in the EU. LAN-1460-A4-BEN / May 2015

# CORNING

## UniCam® Connector Technology Fibre Termination in Seconds



## Termination Solutions Guide

CORNING

## Method 1 — Recommended

The easiest and quickest way to install UniCam® connectors is in combination with our LANscape® solutions 900 µm tight-buffered cables.

- Following the instructions included with your patch panel, simply remove the cable jacket to allow one to two loops of the tight-buffered fibres in the routing guides.
- Install the UniCam connector directly on the tight-buffered fibre using the UniCam high-performance tool kit. This operation takes about a minute.

### *Method 1 — Link of 12 Fibres OM3 (Multimode):*

*2x LANS-01U-B4 — black 1U LANS sliding fibre housing*

*12x LANS-MOD-E7-B — SC Duplex MM/OM3 adapter module, aqua*

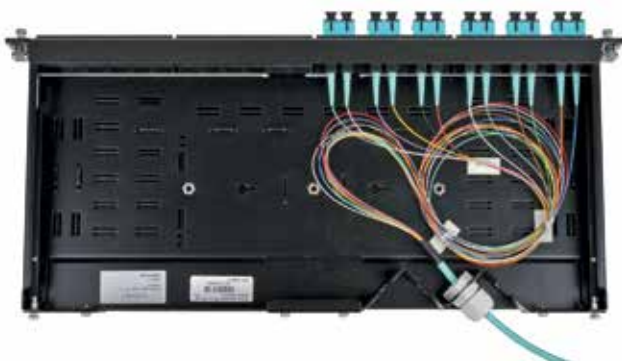
*4x WAXWSM-00108-C001 — pack of six black blanks*

*250 m 012T8X-32188E2G — 12x MM/OM3 FREEDM™ tight buffer indoor/outdoor cable*

*24x 95-050-41-X — SC MM/OM3 high-performance UniCam connector*

#### *Tool kit needed:*

*TKT-UNICAM-PFC — high-performance UniCam tool kit*



## Method 2

For terminations on loose tube or central tube cables (12 fibres or fewer per tube), it is recommended that you use a fan-out kit: FAN-BT25-06 for six fibres or FAN-BT25-12 for 12 fibres.

- Remove the cable jacket such that you have enough buffer tube as required to route within the housing, plus another 10 cm to terminate the fibre on UniCam® connectors.
- Remove the buffer tubing, clean the fibres using alcohol and make sure all gel residues are removed. When using our FREEDM™ gel-free indoor/outdoor cables the cleaning process procedure is less time-consuming.
- Directly install the UniCam connector on the fan-out tubing. This operation takes about two minutes and gives great protection to your 250 µm fibres.

### *Method 2 — Link of 12 Fibres OS2 (Single-mode):*

*2x LANC-01U-B — black 1U LANC fixed fibre housing*

*12x LANS-MOD-72-B — SC Duplex SM adapter module, blue*

*4x WAXWSM-00108-C001 — pack of six black blanks*

*900 m 012EEU-13122D2G — 12x SM/OS2 FREEDM gel-free indoor/outdoor cable*

*2x FAN-BT25-12 — fan-out kit for 12 fibres (60 cm)*

*24x 95-200-41 — SC SM/OS2 UPC high-performance UniCam connector*

#### *Tool kit needed:*

*TKT-UNICAM-PFC — high-performance UniCam tool kit*



## Method 3

This method can only be used with a fixed patch panel without sliding trays. Installers need to **be cautious** and take **extra care** routing and installing the connectors on the 250 µm fibre. There will be reduced tensile strength in connectors and bare fibres in the patch panels.

- Clean the fibres and wipe with alcohol.
- Place a piece of 3 cm 900 µm tubing onto the fibre, such as FAN-BT-3CM.
- Install the UniCam® connector, but before crimping, slide the 3 cm tubing back into the connector.

### *Method 3 — Link of 24 Fibres OM2 (Multimode):*

*2x LANC-01U-B — black 1U LANC fixed fibre housing*

*24x LANC-MOD-D2-B — LC Duplex MM/OM2 adapter module, black*

*4x WAXWSM-00108-C001 — pack of six black blanks*

*150 m 024TRU-T3138A2G — 24x MM/OM2 loose tube dielectric armour indoor/outdoor cable*

*2x FAN-BT-3CM-25 — tubes 250 to 900 µm (25 pieces)*

*48x 95-050-90 — LC MM/OM2 standard-performance UniCam connector*

#### *Tool kit needed:*

*TKT-UNICAM-PFC — high-performance UniCam tool kit*

