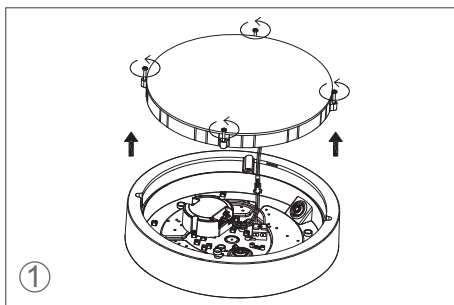
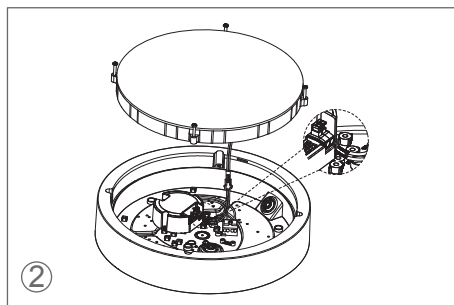


4. Contact an authorised technical service centre for any repairs possibly required use only original spare parts.
5. Do not touch LED while installing or maintaining.
6. Sealing the entrance hole with glue after install is needed.
7. The light source contained in this luminaire shall only be replaced by the manufacturer or his service agent or a similar qualified person.

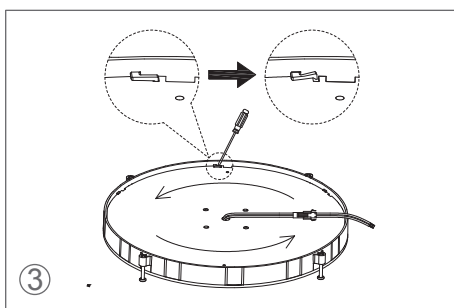
## Instruction for Light Source Disassembly



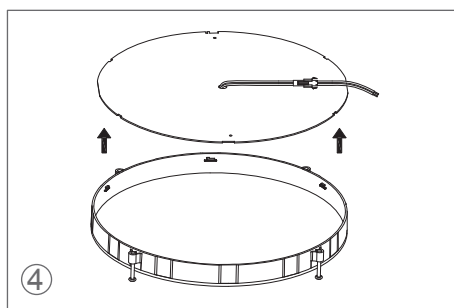
Unscrew the diffuser anticlockwise and vertically take it out.



Disconnect the DC power cable from the driver.



On the reverse of diffuser, use the screwdriver to pry the clips to release the PCBA, then twist the PCBA anticlockwise.



Take out the PCBA (light source) from the diffuser.

\* This product contains a light source of energy efficiency class <D>



IP65

IK10



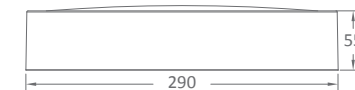
5 year warranty



## OPERATING MANUAL

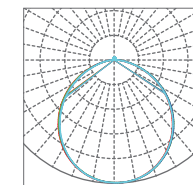
### Brida - Sensor CCT

Important: Please read the instruction manual carefully prior to installation and keep it for future reference.



Ordering Code	Product Fitting Series	Power (W)	Function Description
Brida Sensor CCT Hvid / Sort	Brida	18	Sensor DIM, color temperature selectable, power switchable

Mounting: Wall or Ceiling  
Light features:  
Ra: >80  
Life Time: 5 years  
Light Source: LED SMD2835  
Input: 220V-240V 50/60Hz



#### CCT:

	1	2
I	● 3000K	● 3500K
II	● 3500K	● 4000K
III	● 4000K	● 4000K

Electric Current	Power
300mA	11W
350mA	13W
500mA	18W

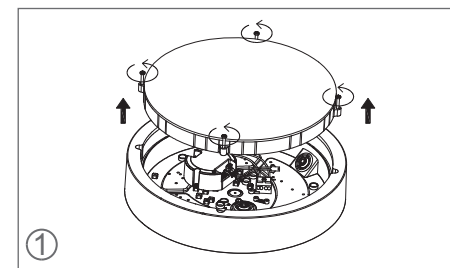
#### Accessories

No.	Pic.	Qty.	Usage
1		3	Fix light
2		3	Rawl plug
3		1	Vandal proof screw tool
4		3	Plastic washer
5		2	Fix cable clip
6		1	Cable clip
7		1	Cable clip
8		4	Plastic plug

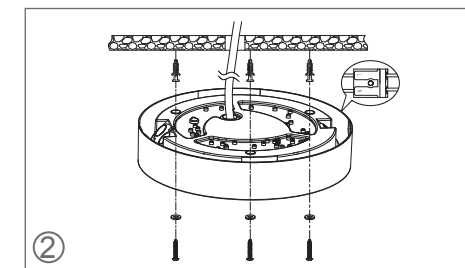
#### Colour Temperature Code

Code	Colour Temperature	CCT(K)	Lumen	
			Hvid	Sort
30K	Warm White	3000	2070	1980
35K	Natural White	3500	2160	2030
40K	Cool White	4000	2196	2070

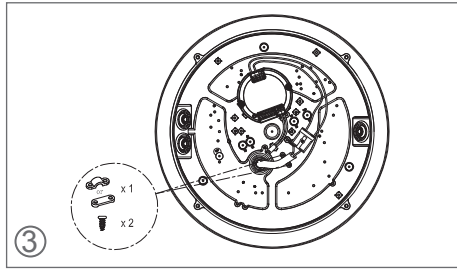
#### Installation



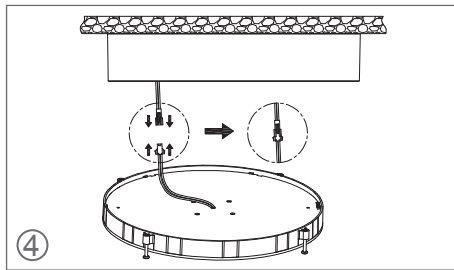
Unscrew the diffuser anticlockwise. Vertically remove the diffuser and PCBA.



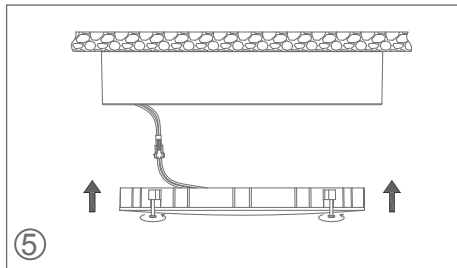
- Cut off the power. Thread the input cable through the rubber plug to the fixture. Connect the L, N wire referring to the wiring diagram.
- Knock the rawl plugs into the pre-drilled holes on ceiling /wall. Wear plastic washers on self-tapping screws and tighten them to fix the fixture on ceiling/wall.



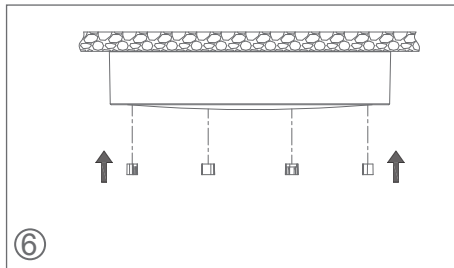
Install the cable clip.



Connect the DC cable.

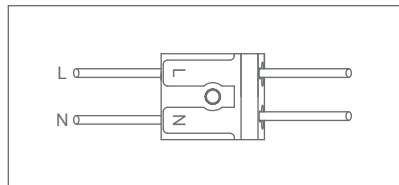


Mount the diffuser onto the base with screws.

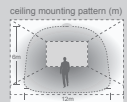


Install the plastic plugs to hide the screws.

## Wiring



## Sensor Setting Options



### Sensitivity

Sensitivity can be adjusted by selecting the combination on the DIP switches for different applications.

	1	
I	●	100%
II	○	50%

I – 100%  
II – 50%



### Hold-time

Hold-time refers to the time period that the light remains 100% on if no more movement is detected.

	2	3	
I	●	●	5s
II	●	○	90s
III	○	●	3min
IV	○	○	10min

I – 5s  
II – 90s  
III – 3min  
IV – 10min

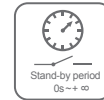


### Daylight sensor

Different daylight threshold can be preset on DIP switches. Light will always turn on upon movement if daylight sensor is disabled.

	4	5	
I	●	●	Disable
II	●	○	50Lux
III	○	●	10Lux
IV	○	○	2Lux

I – Disable  
II – 50Lux  
III – 10Lux  
IV – 2Lux



### Stand-by time

This is the time period that the light remains at a low level before it is completely turned off.

	6	7	
I	●	●	0s
II	●	○	10s
III	○	●	10min
IV	○	○	+∞

I – 0s  
II – 10s  
III – 10min  
IV – +∞



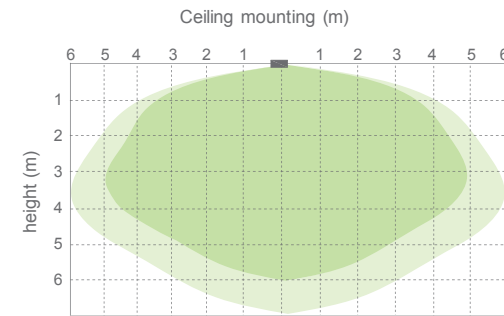
### Stand-by dim level

Light can be dimmed to different levels after hold-time.

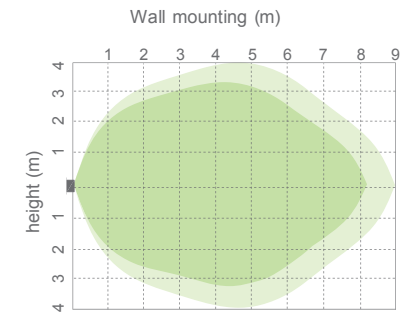
	8	
I	●	10%
II	○	30%

I – 10%  
II – 30%

## Detection Pattern



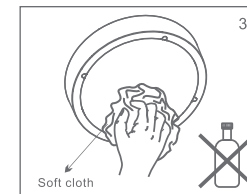
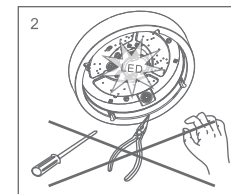
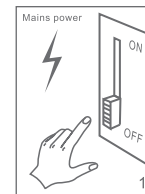
■ high sensitivity area ■ low sensitivity area



■ high sensitivity area ■ low sensitivity area

## Maintenance

1. Cut off the main power first.
2. Don't touch LEDs while maintaining or cleaning.
3. Don't use chemicals to clean the fixture.



Environmental protection: waste electrical products should not be disposed of with household waste. Please recycle where facilities exist. Check with your local authority or retailer for recycling advice.

## Caution

1. The product must be installed by professional technicians and power supply must be cut off before installation.
2. The diameter for AC input wire is 0.75mm<sup>2</sup> (complying with 60245 IEC57), which complies with the latest IEE electrical standards or national standards.
3. Do not touch the electronic circuit and its components.