

# BL 100 PRO-ACTIVE

according to DIN 13277

## Equipment

- Standalone or undercounter installation
- Key switch
- Forced-air cooling
- 2 aluminium drawers
- Automatic defrosting
- Condensate evaporation
- Potential-free contact
- Digital temperature display
- Antifreeze
- Visual and audible alarm signal, even in the case of power failure
- Minimum/maximum temperature memory



*(Interior may differ visually)*

**MADE IN GERMANY**  **CE** 0483

## PRO-ACTIVE-Features

- Faster response time in the event of impending faults thanks to proactive alarms
- Data recording can be read out via USB interface using a USB stick and software
- Minimisation of temperature deviations in the cold room
- Maximum storage safety thanks to harmonised components

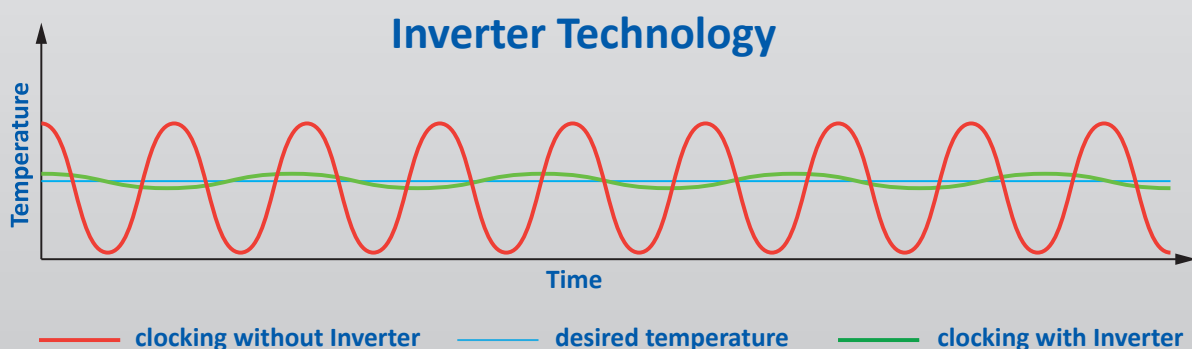


## Compressor with inverter technology

- Environmentally friendly natural refrigerant R600a. Very low GWP value = 3 (Global Warming Potential)
- Reduction in power consumption by 30 % compared to the previous model (power consumption = 0.45 kWh/24h)
- Extended service life due to demand-orientated power adjustment
- Frequency: 50/60 Hz

If you need further support or have any questions, please contact us.

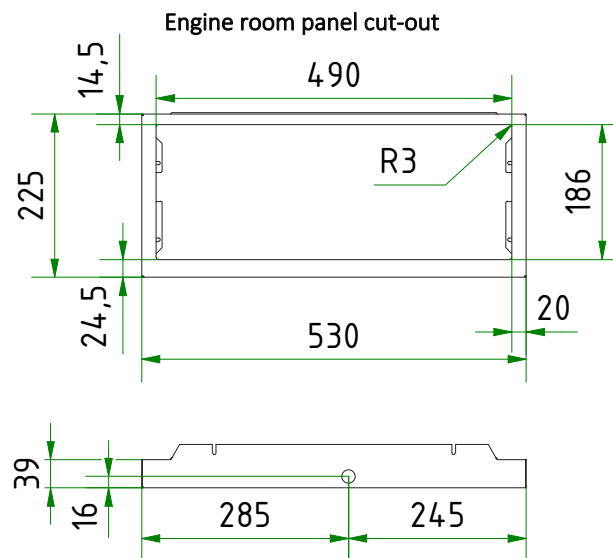
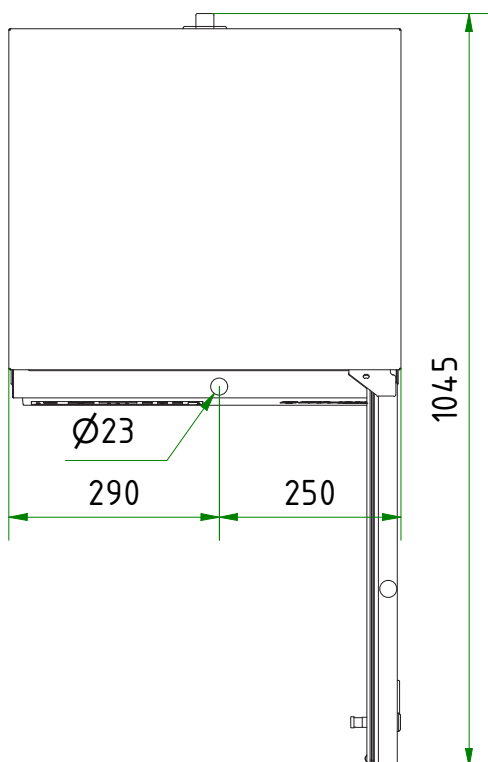
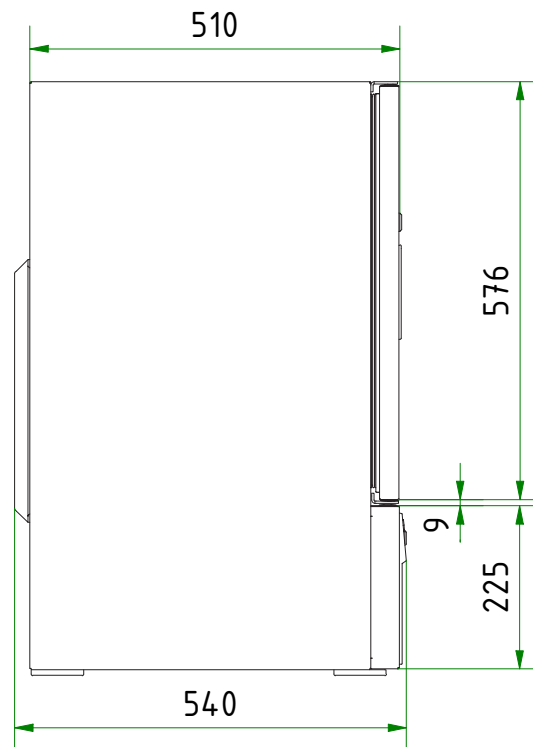
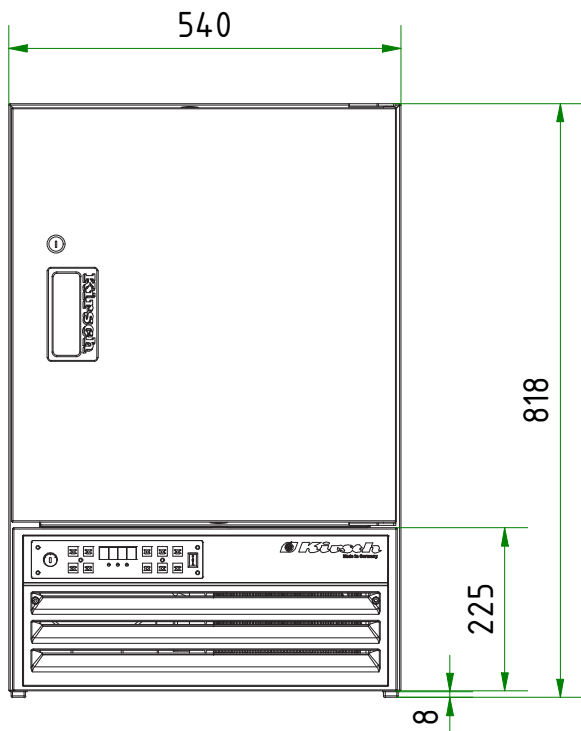
**[info@kirsch-medical.de](mailto:info@kirsch-medical.de)**  
**+49 (0)781 - 9227 0**



- **PRO-ACTIVE- Control:** Permanent, proactive monitoring of the performance data and alerts in the case of deviations – so that you can take countermeasures in good time before a fault threatens your chilled goods; world’s most accurate temperature control in refrigerated areas thanks to two standard PT-1000 sensors
- **External housing** made from galvanised sheet steel (rust-proof), with white, anti-scratch powder coating. Length of the plug cable: approx. 2.8 m.
- **Adjustable feet** positioned at the front to compensate for uneven floors.
- **Interior made from** impact-resistant, white plastic.
- **Interior** consisting of two aluminium drawers on fixed runners with locking mechanism. Stacking height: 19 cm.
- **Extra-thick insulation**, made from high-quality, compression-moulded and environmentally friendly material. Energy saving.
- **Door** with easy-to-replace plastic magnetic seal frame, lockable.
- **Door stop** on the right-hand side (by default, see illustration), or the left-hand side, can be retrofitted.
- **Forced-air cooling**, switches off automatically when you open the door, ensures a uniform temperature and minimizes temperature deviations.
- **Automatic defrosting** with time limit and temperature monitoring.
- **Condensate evaporation** in the refrigerating machine room.
- **Key switch** protected control panel against tampering. Membrane keyboard with digital temperature display and minimum/maximum temperature memory.
- **Warning functions** with visual and audible alarm signal in the case of power failure and temperature deviations. In the case of power failure, the monitoring unit remains in operation for approx. 30 hours on battery power. Door open alarm after 60 seconds.
- **Alarms** can be forwarded via email or SMS using the Kirsch EVOLUTION CLOUD Module (optional).
- **Data documentation** can be read via USB interface with KIRSCH Datanet software.
- **Antifreeze** against sub-zero temperatures.
- **Ventilation-enforced refrigerating machine**, vibration free, hermetically sealed, energy saving, low-noise, easy to service. Inlet air and exhaust air flow through the ventilation slits at the front.
- **Low-noise compressor** reduces noise.

## Specification

|   |                               |
|---|-------------------------------|
| Capacity  | 95 litres                     |
| Temperature setting                               | +4 °C                         |
| Voltage   | 220 – 240 V, 50/60 Hz         |
| Power consumption                                 | 29 watts                      |
| Normal consumption                                | 0.45 kWh/24 h                 |
| Admissible ambient temperature                    | from +10 °C to +38 °C         |
| Heat emission (max.)                              | 142 watts                     |
| Overall dimensions (including distance from wall) | w x d x h = 54 x 54 x 82 cm   |
| useable dimensions                                | w x d x h = 39.5 x 34 x 34 cm |
| Exterior dimensions with door open at 90°         | w x d = 60 x 106 cm           |
| Drawer inner dimensions                           | w x d x h = 37 x 32 x 10 cm   |
| Max. load drawer                                  | 25 kg                         |
| Weight (net/gross)                                | 48 kg/57 kg                   |
| Temperature deviation                             | +/-1.2 °C                     |
| Noise emission                                    | 37.5 dB(A)                    |



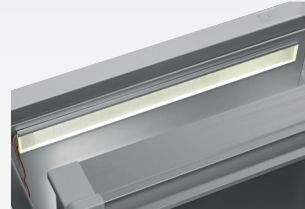
## Optional equipment

KIRSCH refrigerators and freezers offer numerous equipment options that can be retrofitted.



### Lockable glass door

Transparency: avoid opening the door unnecessarily to inspect the contents. Lockable.



### Interior lighting, ceiling

Optional, optimal and energy-efficient lighting for the interior using an LED lightstrip.



### Decorative frame

Made of stainless steel, allows to cover door with a decorative panel (thickness max. 2 mm).



### Condensation tray

For manual draining of condensation water.



### Access Port

Simple insertion of an external temperature sensor with integrated cable feed-through.



### Castors

Can be equipped with steering and fixed castors.



### Door coupling

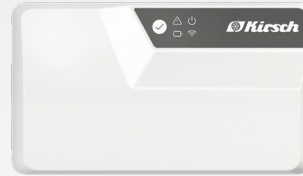
Connects the furniture door to the device.

## Accessories for temperature documentation



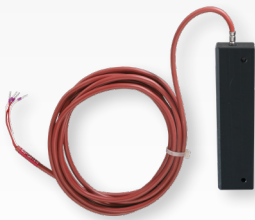
### PC-KIT-NET

Automatic temperature documentation and monitoring via your network (LAN connection).



### KIRSCH EVOLUTION CLOUD-Module

Maximum storage safety through optimal connectivity and real-time monitoring. \*



### External PT100/PT1000 with cold block

Additional temperature sensor for connection to existing/external monitoring system.



### Circular blade temperature recorder

Depending on the model, it is either installed in the machine compartment panel of the unit or integrated into an additional housing attachment.

\* For more information about our cloud, please contact us.

### Philipp Kirsch GmbH

Im Lossenfeld 14  
77731 Willstätt

Telefon: +49 (0) 781 9227-0  
Telefax: +49 (0) 781 9227-200  
info@kirsch-medical.de

[www.kirsch-medical.com](http://www.kirsch-medical.com)



You can find our complete product overview on our website:  
[www.kirsch-medical.com](http://www.kirsch-medical.com)