

5

4

3

2

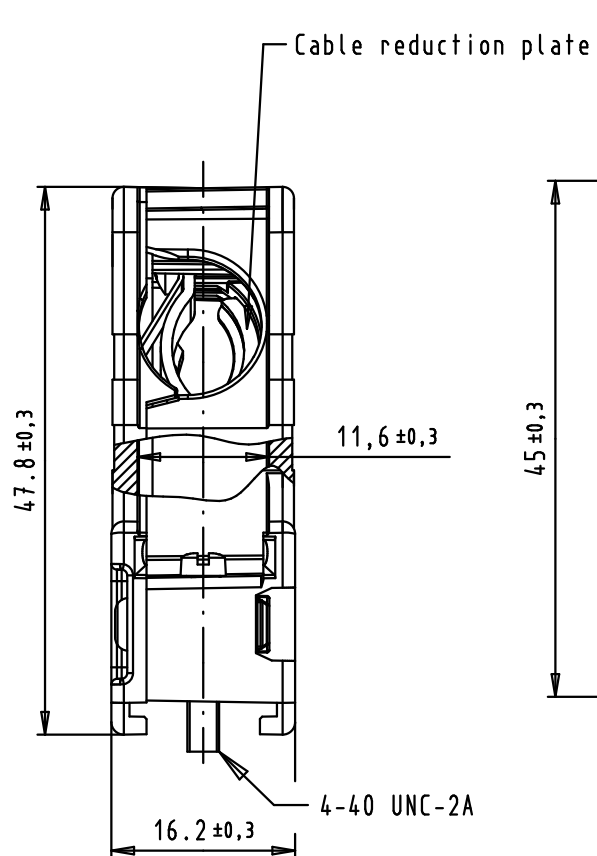
1

D

C

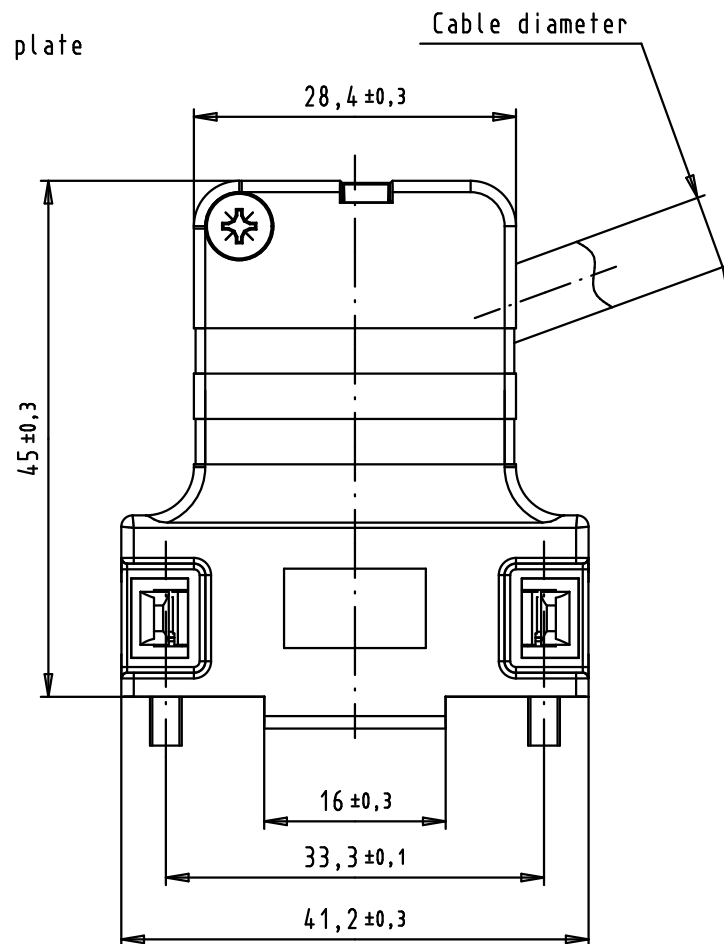
B

A

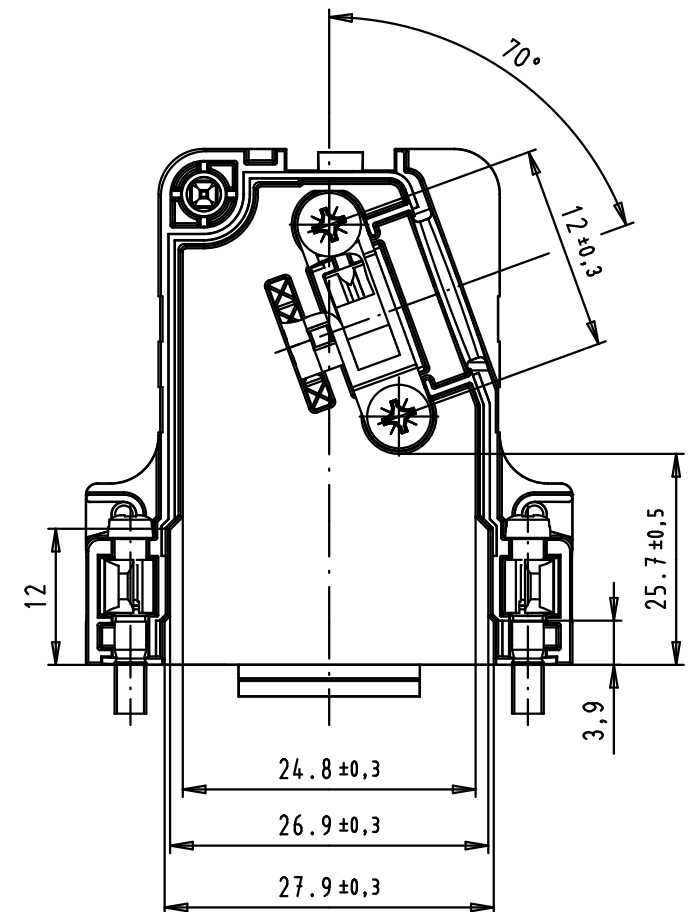




Minimum cable diameter: $\varnothing 3.5$
Maximum cable diameter: $\varnothing 8.6$

Maximum screwing torque for hood assembly: 0,4 N.m



View without cover



				Dat.	Name	 All Dim. in mm Orig. Size DIN A 4	D-Sub, 15 poles, metallized, side entry, short screws	Maßstab/ Scale 1,5:1
			Detail.	24/01/08	LP			
			Insp.	13/05/11	JB			
			Stand.					
EC03120	13/05/11	SD	HARTING EURL F-95972 Paris				TB 09 67 015 0448	Blatt/ Page 1 / 1
34799	24/01/08	lp						
Mod.	Dat.	Name						