

## D-Sub M 17W2 ANG FE 20A UNC NM30 BL

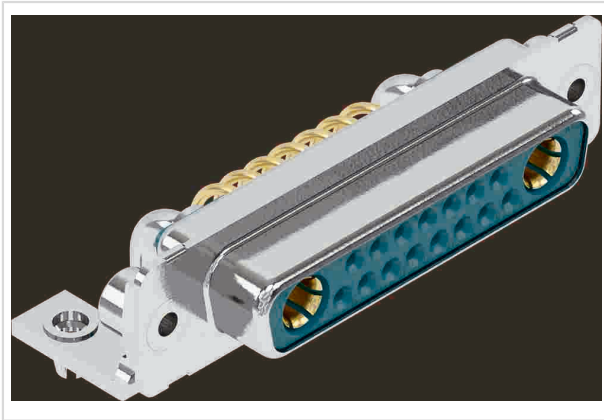


Image is for illustration purposes only. Please refer to product description.

Part number	09 69 300 9207
Specification	D-Sub M 17W2 ANG FE 20A UNC NM30 BL
HARTING eCatalogue	<a href="https://b2b.harting.com/09693009207">https://b2b.harting.com/09693009207</a>

### Identification

Category	Connectors
Series	D-Sub
Identification	Mixed
Element	Connector
Description of the contact	Turned Angled

### Version

Termination method	Wave soldering termination
Gender	Female
Size	D-Sub 3
Number of contacts	17
Number of signal contacts	15
Number of power contacts	2
PCB fixing	With frame With board locks
Locking type	Fixing flange with thread 4-40 UNC

### Technical characteristics

Contact spacing (termination side)	2.54 mm
Flange height	7.3 mm
Rated current	5 A
Rated current (power)	20 A
Insulation resistance	$>10^5 \Omega$



Pushing Performance  
 Since 1945

## Technical characteristics

Contact resistance, signal area	≤10 mΩ
Contact resistance, power area	≤1 mΩ
Tightening torque	≤0.6 Nm Female screw lock
Limiting temperature	-55 ... +125 °C
Performance level	NM 30 (S4) 1
Mating cycles	≥500
Test voltage $U_{r.m.s.}$	1 kV
Isolation group	IIIa (175 ≤ CTI < 400)
PCB thickness	1.6 mm
Hot plugging	No

## Material properties

Material (insert)	Thermoplastic resin, glass-fibre filled (PBT) Shell: steel, tin plated
Colour (insert)	Green
Material (contacts)	Copper alloy
Surface (contacts)	Gold plated Mating side Sn over Ni Termination side
Layer thickness	≥0.76 μm
Layer thickness	≥30 μinch
Material flammability class acc. to UL 94	V-0
RoHS	compliant with exemption
RoHS exemptions	6(a) / 6(a)-I: Lead as an alloying element in steel for machining purposes and in galvanised steel containing up to 0,35 % lead by weight / Lead as an alloying element in steel for machining purposes containing up to 0,35 % lead by weight and in batch hot dip galvanised steel components containing up to 0,2 % lead by weight 6(c): Copper alloy containing up to 4 % lead by weight
ELV status	compliant with exemption
China RoHS	50
REACH Annex XVII substances	Not contained
REACH ANNEX XIV substances	Not contained
REACH SVHC substances	Yes
REACH SVHC substances	Lead
ECHA SCIP number	ecef7555-f643-4ceb-a337-fc54762297f1
California Proposition 65 substances	Yes



**Pushing Performance**  
Since 1945

## Material properties

California Proposition 65 substances      Lead

Requirement set with Hazard Levels      R26

## Specifications and approvals

Specifications      DIN 41652-1  
CECC 75301-802

UL / CSA      UL 1977 ECBT2.E102079

## Commercial data

Packaging size      25

Net weight      24.08 g

Country of origin      Germany

European customs tariff number      85366990

GTIN      5713140100237

eCl@ss      27440214 D-Sub coupler